

Estelle Manor

FALLOW HOUSE





THE GROUNDS

WALKING DISTANCE FROM THE MANOR HOUSE

WALLED GARDEN	<i>4-minute walk</i>
STABLES	<i>4-minute walk</i>
WOODLAND COTTAGES	<i>7-minute walk</i>
BLUEBELL HOUSE	<i>5-minute walk</i>
THE FARRIERS	<i>5-minute walk</i>
HOLLYHOCK	<i>4-minute walk</i>
FALLOW HOUSE	<i>6-minute walk</i>
EYNSHAM BATHS	<i>7-minute walk</i>
REDWOOD LODGE	<i>2-minute walk</i>
PICNIC VILLAGE	<i>4-minute walk</i>



FALLOW HOUSE

Opening its doors in early 2025, Fallow House will be a dedicated events space in the grounds of Estelle Manor.

Sitting on the west side of our 85-acre estate, conveniently placed between our Manor House and Eynsham Baths, it will be the ideal location for larger groups with three meeting areas, including an intimate private dining room, and a grand room for the most generous of guest lists.



OVERVIEW

- Dedicated events space
- Double-height entrance hall with dual staircases
- Set over two floors
- Size: 540 sq m

SPACES

- Arrival hall
- Grand room with double-height ceiling & open fireplace for up to 100 guests
- Two bars
- Three meeting areas
- Private dining room

AUDIO/VIDEO

- Each meeting room has a 65" screen and conference calling systems
- Grand Room fitted with a 3.5m wide screen, which is covered by a tapestry when not in use
- Grand Room has a projector with HDMI connectivity

REFINED & UNDERSTATED

The serene design and architecturally captivating backdrop of Fallow House set a versatile scene for all manner of events. Flemish-inspired tranquillity meets contemporary sophistication, drawing inspiration from the aesthetics of Vincent Van Duysen alongside the raw designs of Axel Vervoordt.

Whether looking to celebrate a milestone moment or host an impressive corporate occasion, each minimalist space is crafted with raw, natural materials and layered with antique pieces, seamlessly blended to create a timeless sense of sophistication.





THE GRAND ROOM

The largest space within Fallow House, our 99 sq m Grand Room, features a double-height vaulted ceiling with textured pendant lighting falling from traditional beams. Lined with windows on three of four walls, natural light abounds to bring the clean and neutral colour palette to life.

The open fireplace at the head creates a cosy, homely feel to ground this generously sized space, perfectly suited to either a seated dinner or standing cocktail party. The restrained but thoughtful design maintains an uncluttered yet inviting setting, transforming seamlessly from day to night for every occasion.



The capacity of The Grand Room varies based on configuration as follows:

STANDING COCKTAIL RECEPTION: 100 guests

SEATED AT ROUND TABLES – 60 guests

THEATRE STYLE – 70 guests

CABARET STYLE WITH STAGE – 40 guests

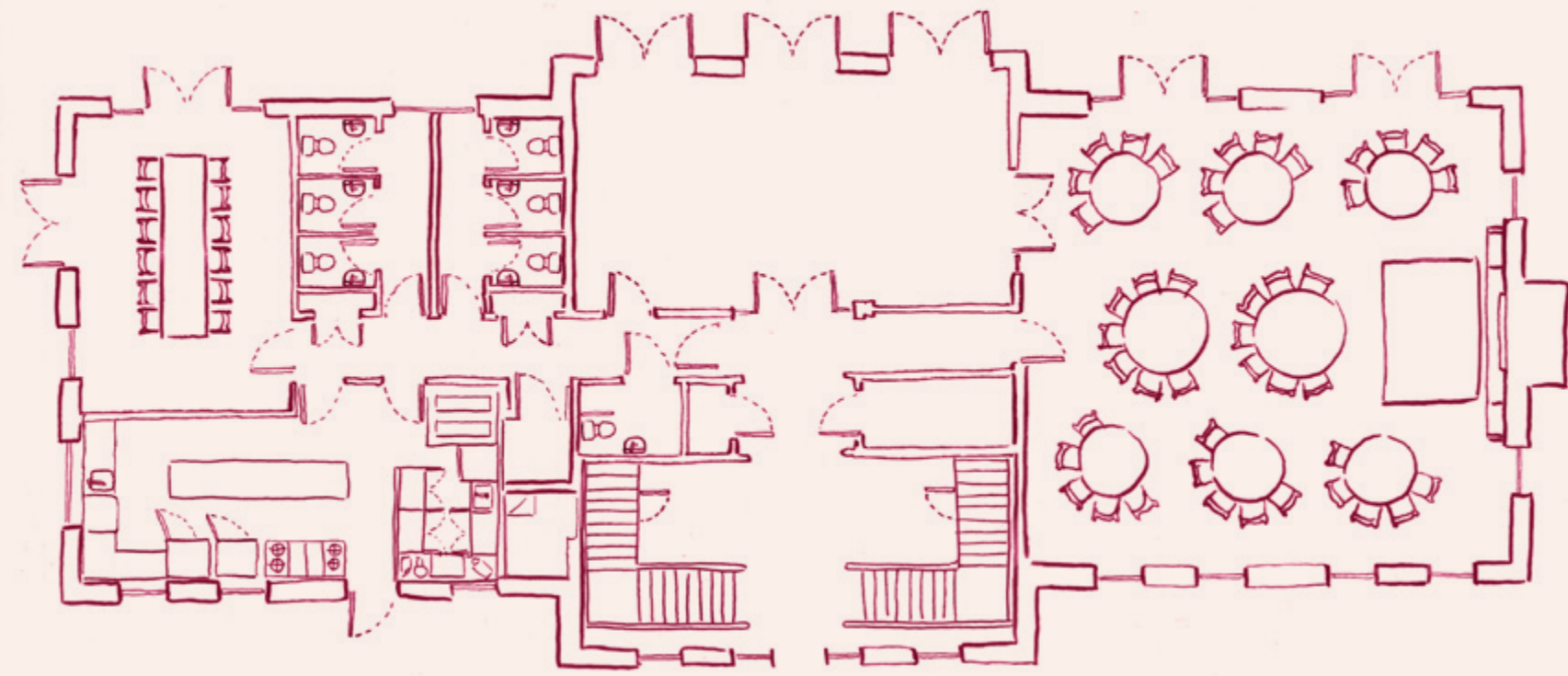
DINING

With a dedicated kitchen on site, bespoke private dining menus will be filled with Estelle classics from our expert culinary team. Both bars will also offer tailored menus of fine wines, refreshing cocktails and soft drinks.

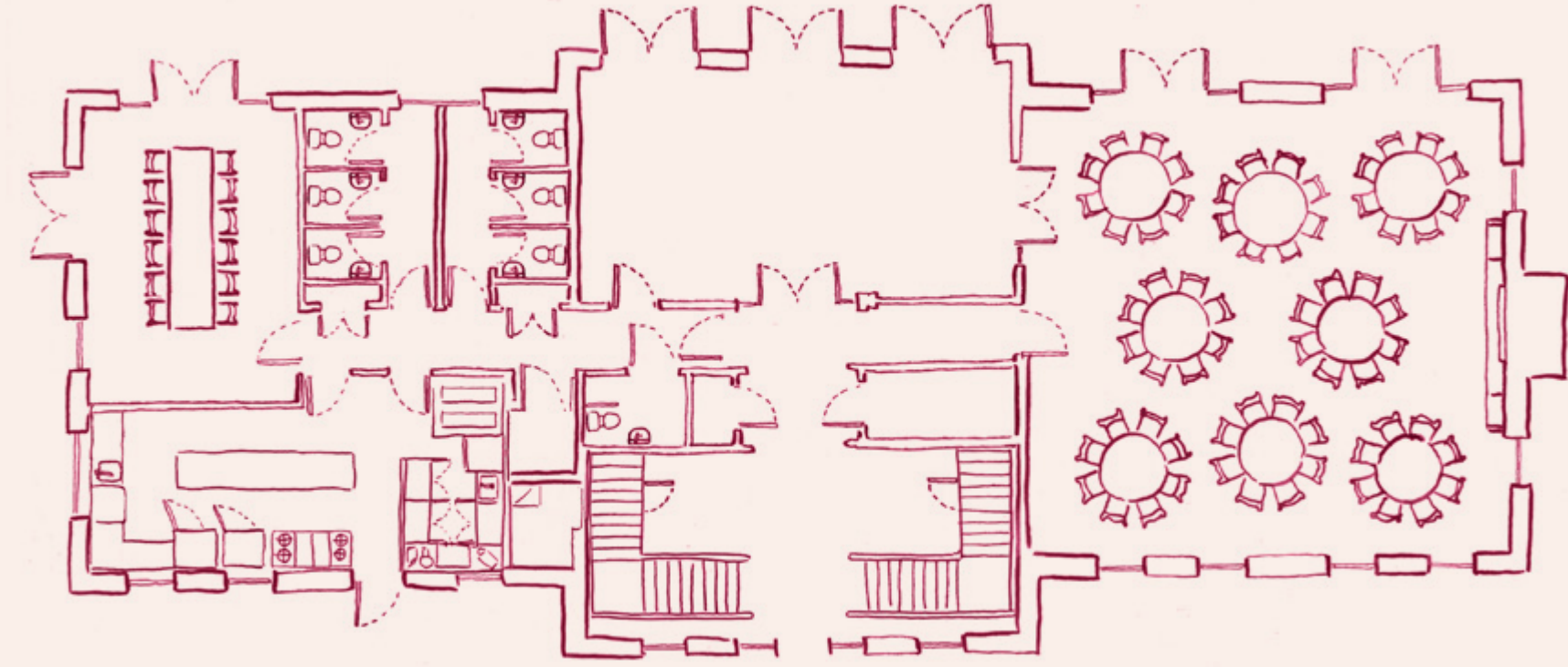
From morning pastries and lighter sharing dishes for daytime meetings to opulent feasting menus for a celebration to remember, there will be a number of options to cater every desire.



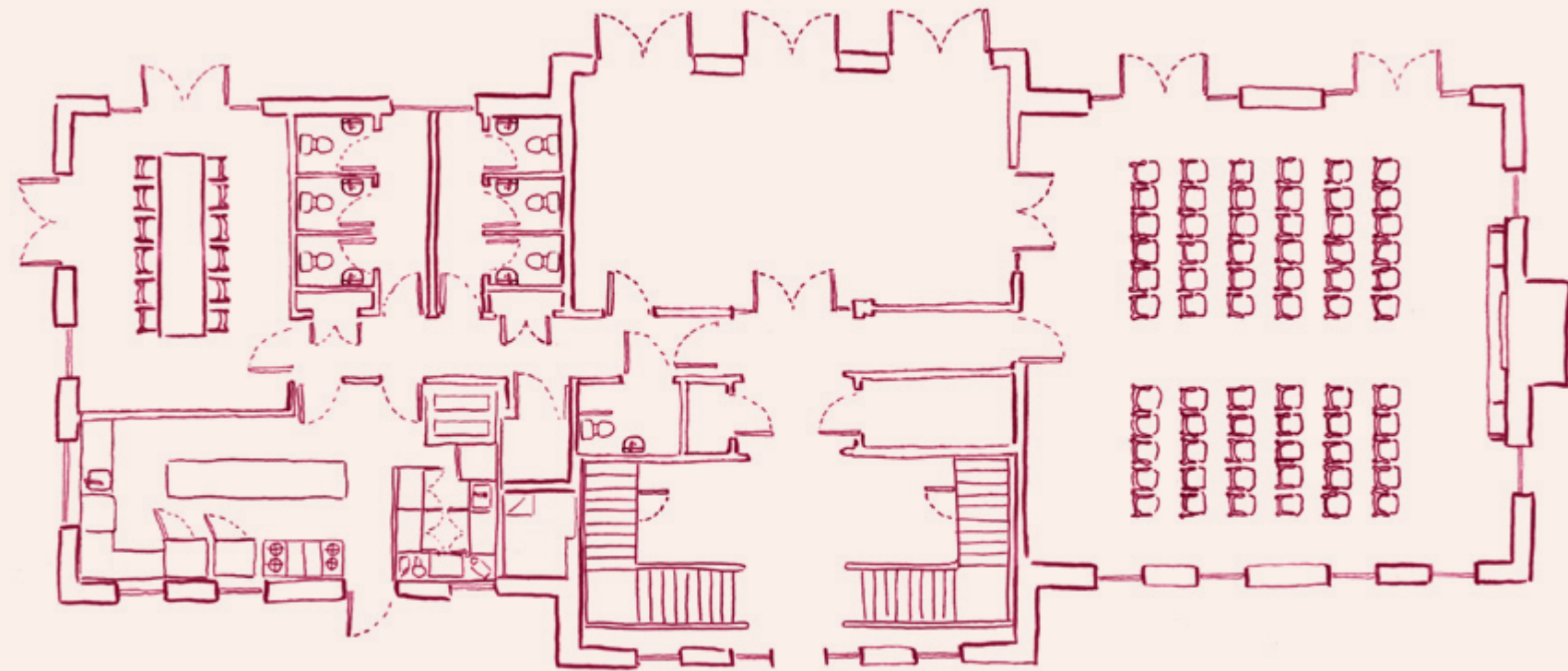
FLOORPLANS



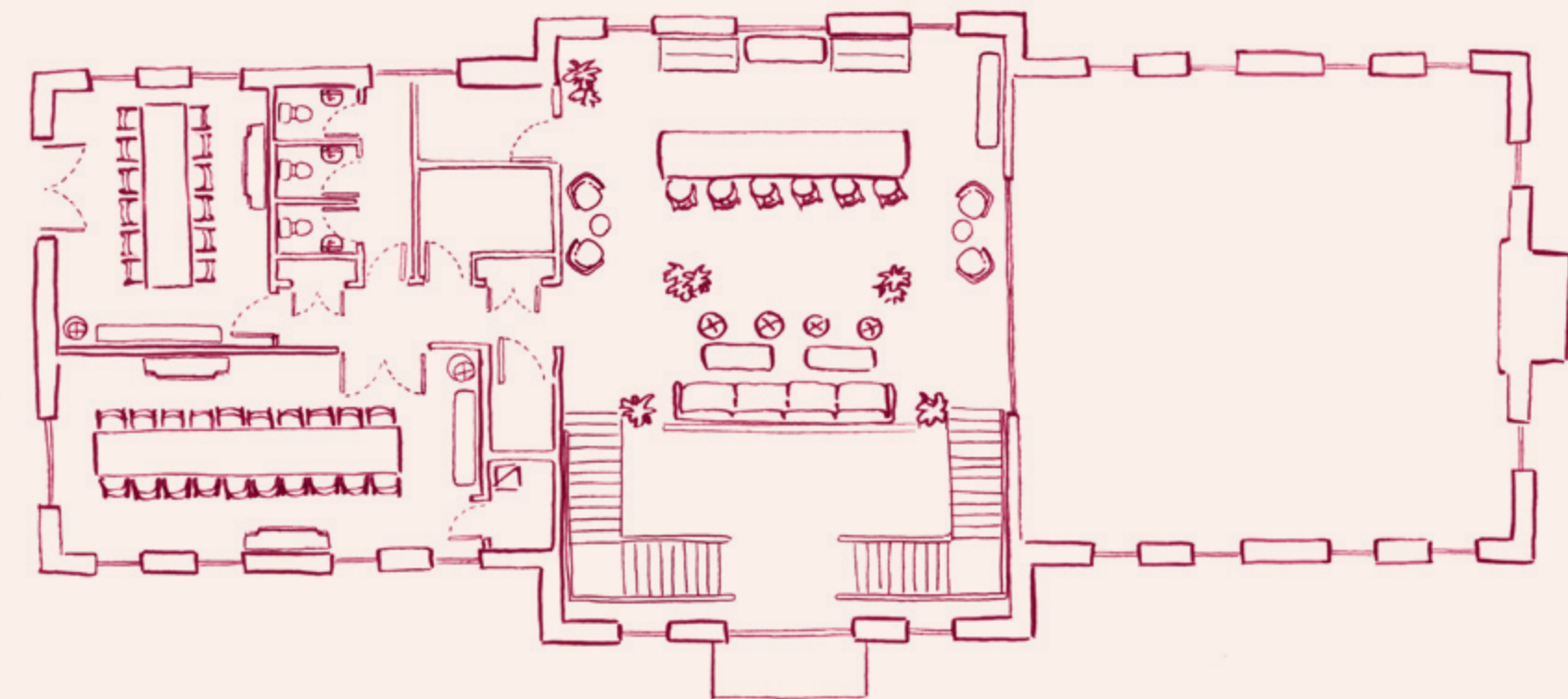
Ground Floor - Cabaret



Ground Floor - Banquet



Ground Floor - Theatre



First Floor



Come and **EXPLORE**
our hosted home

CONTACT OUR TEAM FOR MORE DETAILS:

events@estellemanor.com | +44 (0) 1993 685880

estellemanor.com | @estellemanor

Estelle Manor, Eynsham Park, Oxfordshire, OX29 6PN, England

PLEASE SEE GDS DETAILS BELOW:

AMADEUS: OXFEST | SABRE: 604130 | GALILEO/APOLLO: H8911 | WORLDSPAN:OXFES | DHISCO: 43852