

# Estelle Manor

FALLOW HOUSE





# THE GROUNDS

## WALKING DISTANCE FROM THE MANOR HOUSE

WALLED GARDEN	4-minute walk
STABLES	4-minute walk
WOODLAND CABINS	7-minute walk
BLUEBELL HOUSE	5-minute walk
THE FARRIERS	5-minute walk
HOLLYHOCK	4-minute walk
FALLOW HOUSE	6-minute walk
EYNSHAM BATHS	7-minute walk
REDWOOD LODGE	2-minute walk



# FALLOW HOUSE

*A dedicated events space in the grounds of Estelle Manor, Fallow House sits on the west side of our 85-acre estate.*

*Conveniently placed between our Manor House and Eynsham Baths, it's the ideal location for larger groups with three meeting spaces, that can also be used as private dining rooms, and our grand room, The Chestnut, for the most generous of guest lists.*



## OVERVIEW

- Dedicated events space
- Double-height entrance hall with dual staircases
- Set over two floors
- Size: 540 sq m

## SPACES

- Arrival hall
- The Chestnut: our largest room for up to 100 guests, with a double-height ceiling and open fireplace
- Two bars – The Tawny Bar and The Owlet Bar
- Three meeting areas/ private dining rooms – The Buckthorn, The Wren and The Fawn

## AUDIO/VIDEO

- Each meeting room has a 65” screen and conference calling systems
- The Chestnut is fitted with a 3.5m wide screen, covered by a tapestry when not in use
- The Chestnut also has a projector with HDMI connectivity

## REFINED & UNDERSTATED

The serene design and architecturally captivating backdrop of Fallow House set a versatile scene for all manner of events. Flemish-inspired tranquillity meets contemporary sophistication, drawing inspiration from the aesthetics of Vincent Van Duysen alongside the raw designs of Axel Vervoordt.

Whether looking to celebrate a milestone moment or host an impressive corporate occasion, each minimalist space is crafted with raw, natural materials and layered with antique pieces, seamlessly blended to create a timeless sense of sophistication.





## THE CHESTNUT

The largest space within Fallow House, The Chestnut is 99 sq m featuring a double-height vaulted ceiling with textured pendant lighting falling from traditional beams. Lined with windows on three of four walls, natural light abounds to bring the clean and neutral colour palette to life.

The open fireplace at the head creates a cosy, homely feel to ground this generously sized space, perfectly suited to either a seated dinner or standing cocktail party. The restrained but thoughtful design maintains an uncluttered yet inviting setting, transforming seamlessly from day to night for every occasion.



The capacity of of The Chestnut varies based on configuration as follows:

**STANDING COCKTAIL RECEPTION: 100 guests**

**SEATED AT ROUND TABLES – 60 guests**

**THEATRE STYLE – 70 guests**

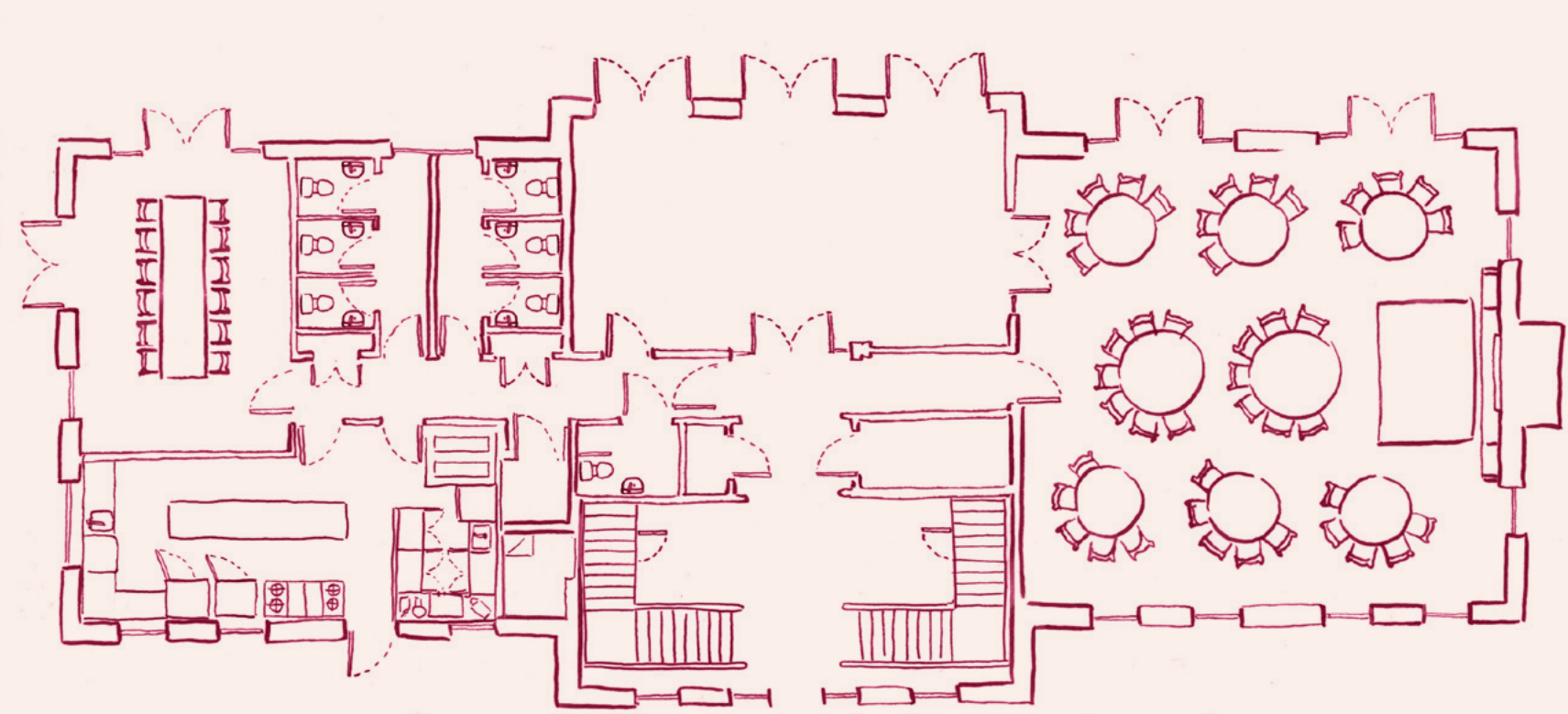
**CABARET STYLE WITH STAGE – 40 guests**

DINING

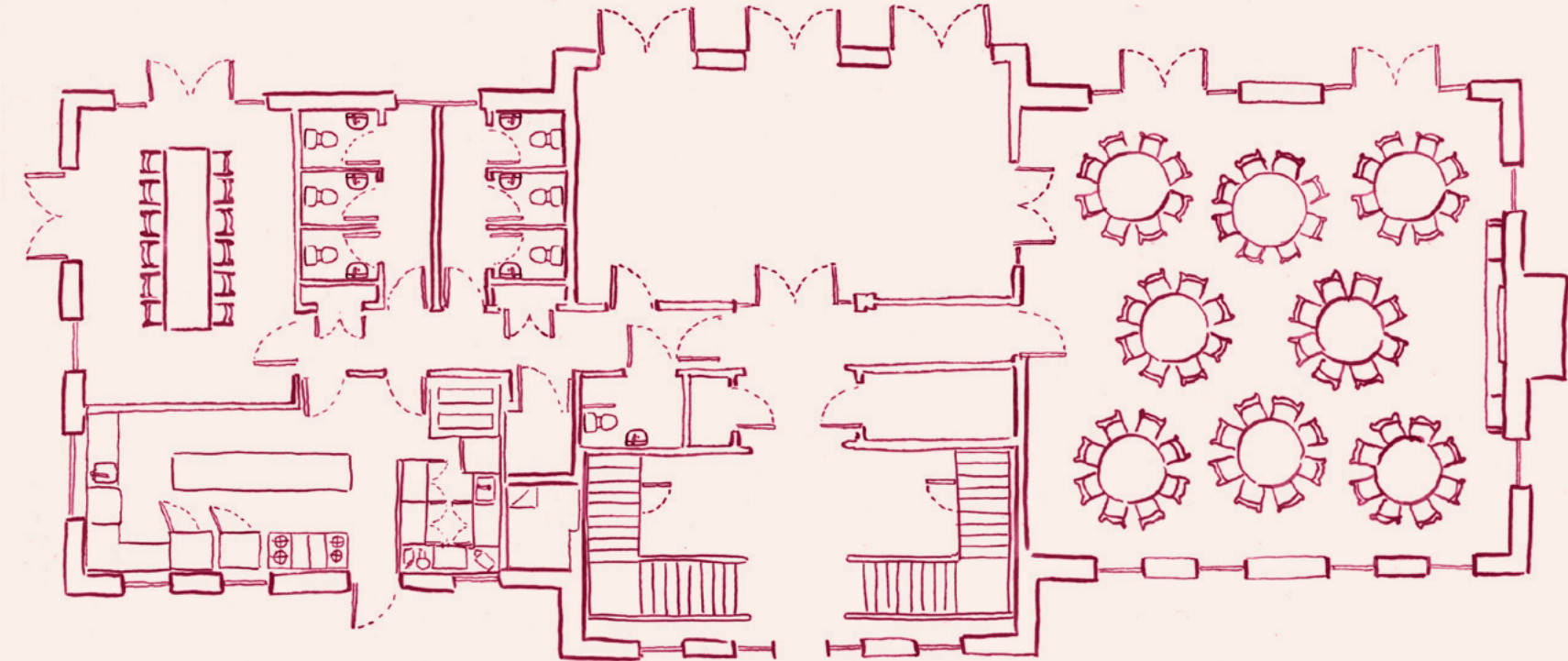
With a dedicated kitchen on site, bespoke private dining menus are filled with Estelle classics from our expert culinary team. Every occasion can be catered to, from hearty breakfasts and energising snacks to bento boxes and plated dinners. Both bars also offer tailored menus of fine wines, refreshing cocktails and soft drinks.

From morning pastries and working lunches filled with tasty salads and warming choices for daytime meetings, to opulent feasting menus with dishes such as native lobster salad and Cumbrian beef fillet Wellington for a celebration to remember, there are plenty of options to fulfil every desire.

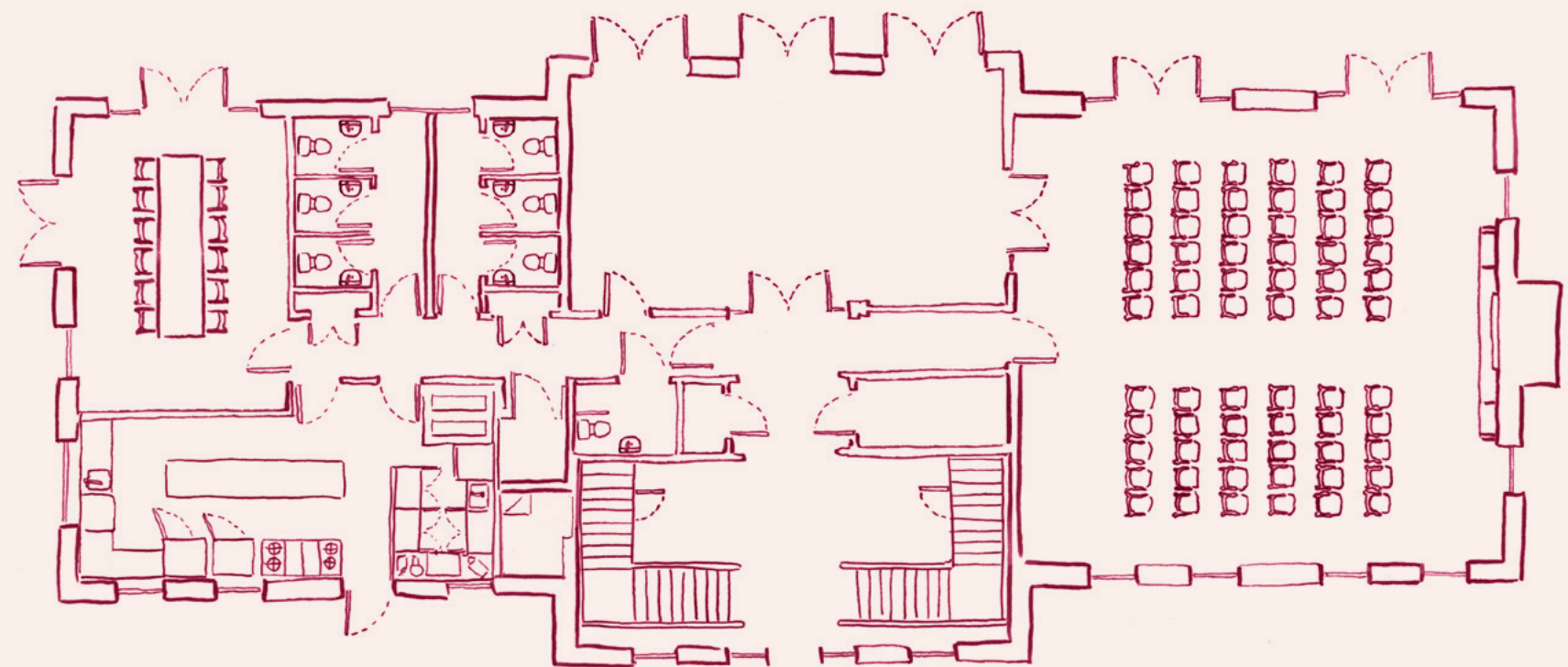




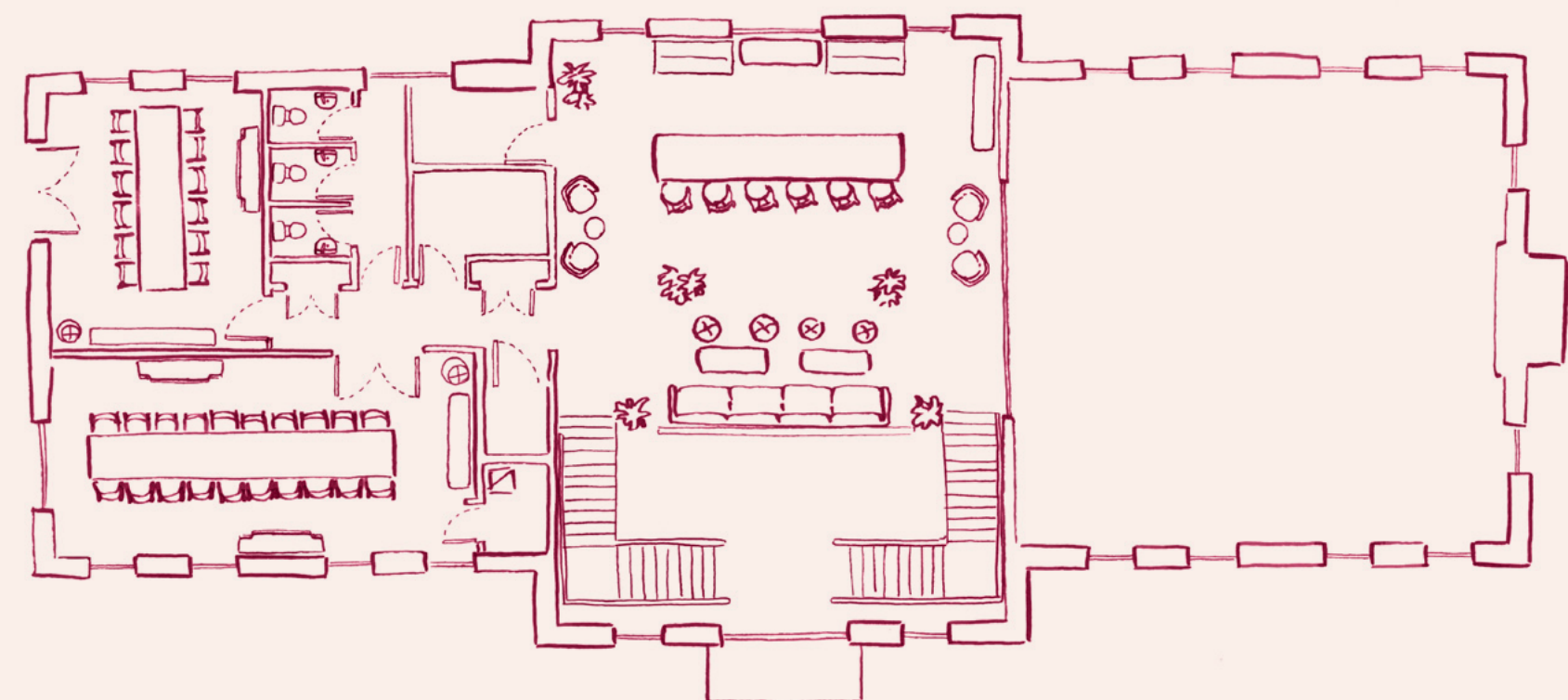
Ground Floor - Cabaret



Ground Floor - Banquet



Ground Floor - Theatre



First Floor



Come and EXPLORE  
our *hosted home*

---

CONTACT OUR TEAM FOR MORE DETAILS:

[events@estellemanor.com](mailto:events@estellemanor.com) | +44 (0) 1993 685880

[estellemanor.com](http://estellemanor.com) | @estellemanor

Estelle Manor, Eynsham Park, Oxfordshire, OX29 6PN, England

PLEASE SEE GDS DETAILS BELOW:

AMADEUS: OXFEST | SABRE: 604130 | GALILEO/APOLLO: H8911 | WORLDSPAN: OXFES | DHISCO: 43852